



eZ-TimeView™

General Information

eZ-TimeView™

Like eZ-PostView™, eZ-TimeView™ is supported with all IOtech data acquisition View packages. In addition to eZ-PostView features, eZ-TimeView supports these additional features:

- Simulated data playback allows the user to playback acquired data to the display windows in real-time or in single steps
- Data strip chart displays add powerful data scrolling, scaling, zooming and cursor synchronization capabilities
- Windowed display capabilities
- Powerful data calculations and statistics such as peak-peak, mean, RMS
- Peak min/max search capabilities

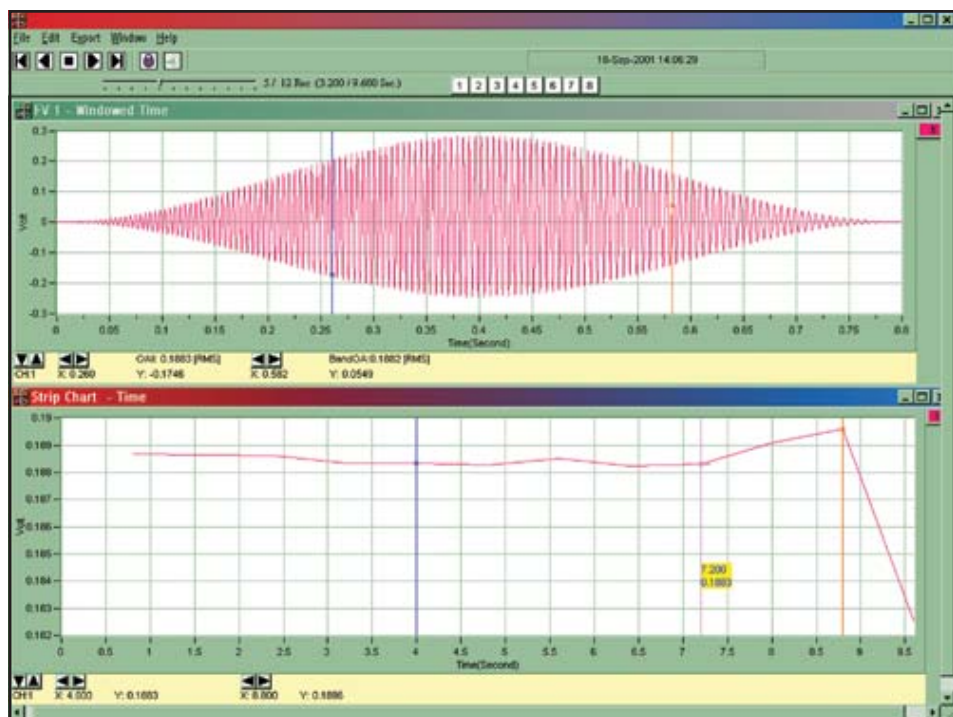
Acquired data can be played back in real-time or in single sampled data point increments. The strip chart feature allows easy to use data scrolling as well as scaling of the data by the user. Areas of interest can also be zoomed in via mouse movement on the time axis or by a zoom box which allows zooming in on both the time and the magnitude axis simultaneously. Searches can be performed on min or max peak data.

eZ-TimeView also includes powerful calculation and statistics. Min/max peak difference as well as mean and RMS calculations can be performed on the entire data set or between band cursors.

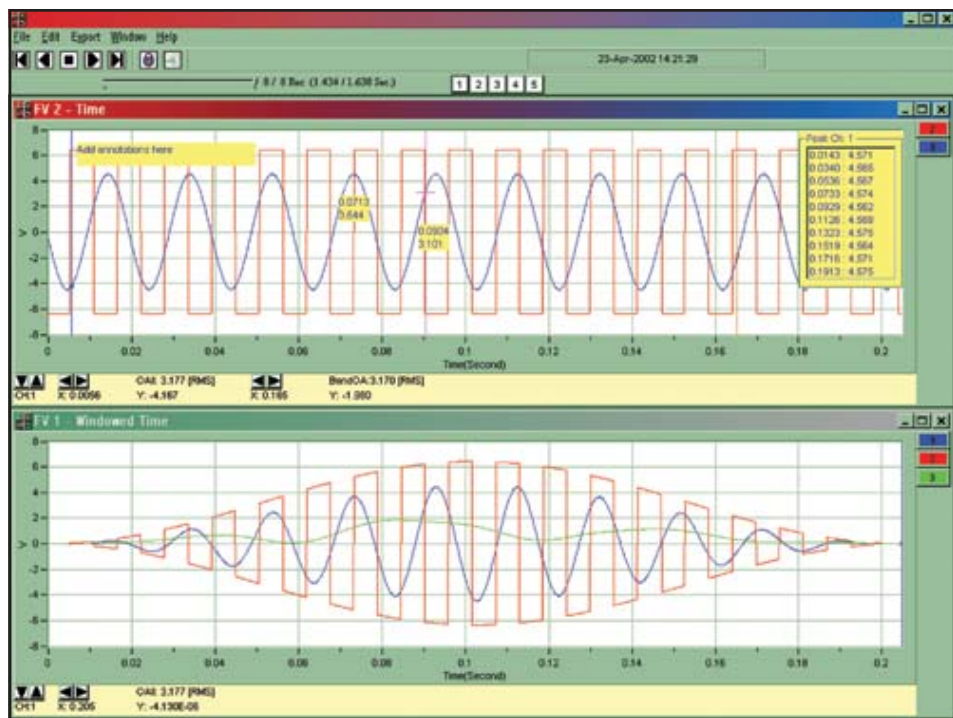
eZ-TimeView's strip chart also allows you to synchronize the strip chart display data with function view display data so that you can analyze different aspects of the time data with their corresponding transfer Function.

Ordering Information

Description	Part No.
Time-domain analysis software for all IOtech Out-of-the-Box™ software packages	eZ-TimeView



eZ-TimeView automatically synchronizes strip chart windows with function windows and will scale and zoom each window so that various aspects of the data can be analyzed simultaneously



eZ-TimeView allows you to search for peaks on any channel as well as providing built-in data and text annotation anywhere on the chart